

Anti-OPN Antibody
Catalog # ABO10753**Specification**

Anti-OPN Antibody - Product Information

Application	WB, IHC-P
Primary Accession	P10451
Host	Rabbit
Reactivity	Human
Clonality	Polyclonal
Format	Lyophilized

Description

Rabbit IgG polyclonal antibody for Osteopontin(SPP1) detection. Tested with WB, IHC-P in Human.

Reconstitution

Add 0.2ml of distilled water will yield a concentration of 500ug/ml.

Anti-OPN Antibody - Additional Information

Gene ID 6696

Other Names

Osteopontin, Bone sialoprotein 1, Nephropontin, Secreted phosphoprotein 1, SPP-1, Urinary stone protein, Uropontin, SPP1, BNSP, OPN

Calculated MW

35423 MW KDa

Application Details

Immunohistochemistry(Paraffin-embedded Section), 0.5-1 µg/ml, Human, By Heat
Western blot, 0.1-0.5 µg/ml, Human

Subcellular Localization

Secreted.

Tissue Specificity

Bone. Found in plasma.

Protein Name

Osteopontin

Contents

Each vial contains 5mg BSA, 0.9mg NaCl, 0.2mg Na₂HPO₄, 0.05mg Thimerosal, 0.05mg NaN₃.

Immunogen

A synthetic peptide corresponding to a sequence at the N-terminus of human Osteopontin(28-47aa EEKQLYNKYPPDAVATWLNP), different from the related mouse sequence by six amino acids.

Purification

Immunogen affinity purified.

Cross Reactivity

No cross reactivity with other proteins

Storage

At -20°C for one year. After reconstitution, at 4°C for one month. It can also be aliquotted and stored frozen at -20°C for a longer time. Avoid repeated freezing and thawing.

Sequence Similarities

Belongs to the osteopontin family.

Anti-OPN Antibody - Protein Information

Name SPP1

Synonyms BNSP, OPN

Function

Major non-collagenous bone protein that binds tightly to hydroxyapatite. Appears to form an integral part of the mineralized matrix. Probably important to cell-matrix interaction.

Cellular Location

Secreted

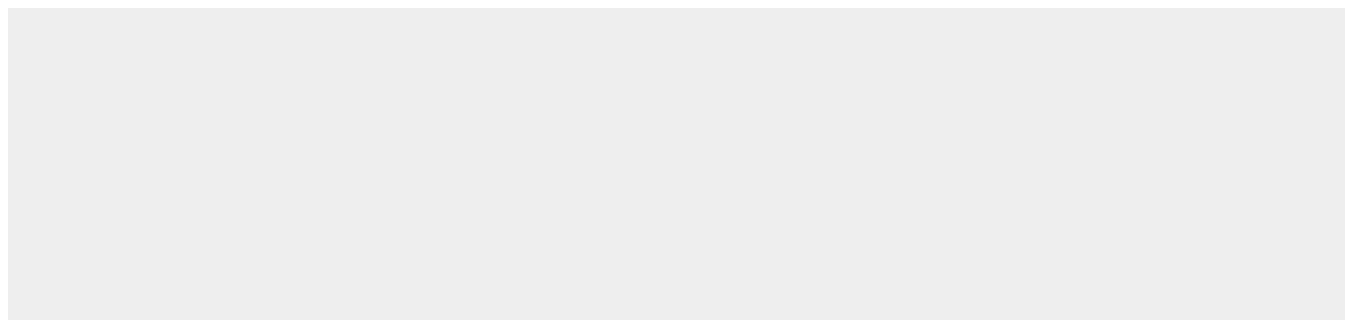
Tissue Location

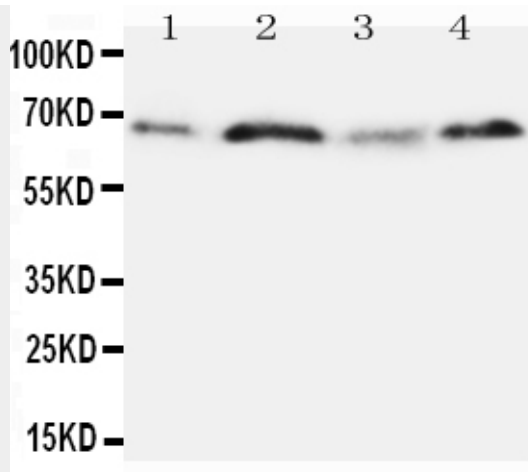
Detected in cerebrospinal fluid and urine (at protein level) (PubMed:25326458, PubMed:36213313, PubMed:37453717) Bone. Found in plasma.

Anti-OPN Antibody - Protocols

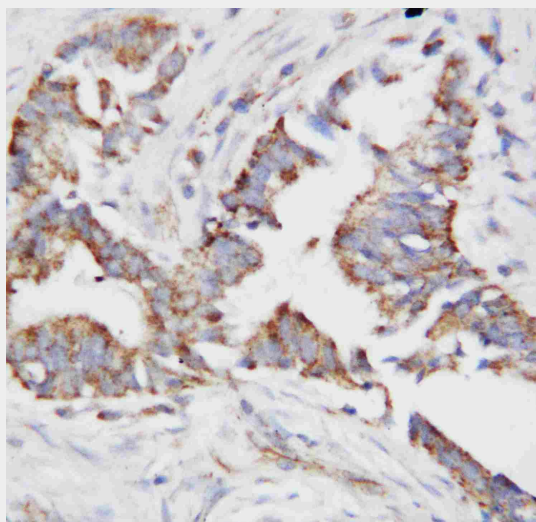
Provided below are standard protocols that you may find useful for product applications.

- [Western Blot](#)
- [Blocking Peptides](#)
- [Dot Blot](#)
- [Immunohistochemistry](#)
- [Immunofluorescence](#)
- [Immunoprecipitation](#)
- [Flow Cytometry](#)
- [Cell Culture](#)

Anti-OPN Antibody - Images



Anti-Osteopontin antibody, ABO10753, Western blotting
Lane 1: MM231 Cell Lysate
Lane 2: HELA Cell Lysate
Lane 3: JURKAT Cell Lysate
Lane 4: COLO320 Cell Lysate



Anti-Osteopontin antibody, ABO10753, IHC(P)
IHC(P): Human Mammary Cancer Tissue

Anti-OPN Antibody - Background

Osteopontin(OPN) also called urinary stone protein, secreted phosphoprotein 1(SPP1), bone sialoprotein, and early T lymphocyte activation 1(ETA1). Osteopontin is a phosphorylated glycoprotein secreted to the mineralizing extracellular matrix by osteoblasts during bone development. Osteopontin is presumably involved in stone formation as stone matrix. The deduced protein sequence reveals a 317-amino acid protein(34,982 Da) containing a 16-amino acid hydrophobic signal sequence and a 33,352-Da protein destined to undergo extensive post-translational modifications before being secreted from the cell. The gene is located on human chromosome 4. The standard product used in this kit is recombinant human OPN, consisting of 17-314 amino acid sequence with the molecular mass of 32.9KDa. As a result of glycosylation, the molecular mass is 60-65KDa.